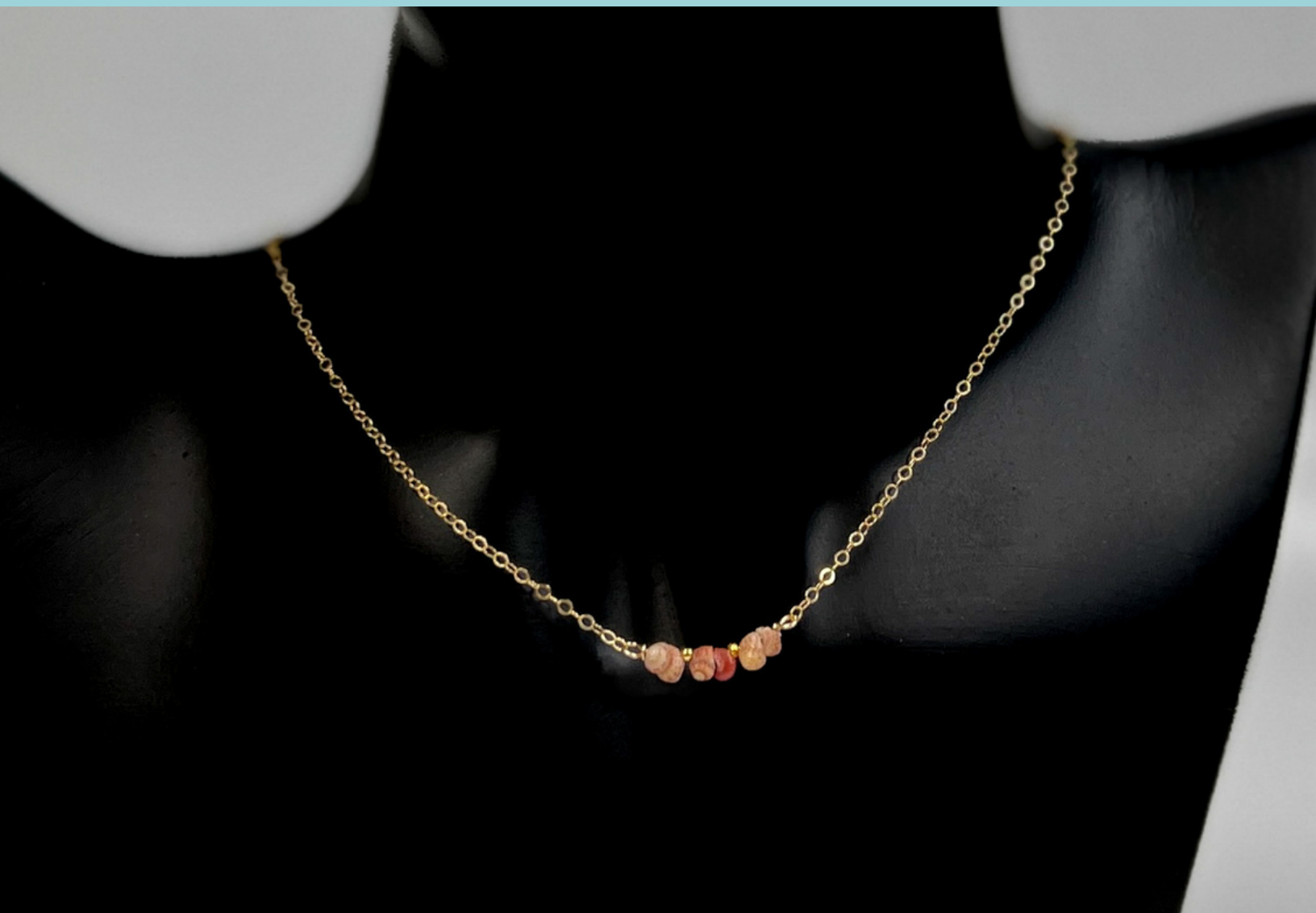




The Bead Gallery



KAUAI KAHELELANI SHELL NECKLACE  
KIT

This exclusive Kauai Kahelelani Shell Necklace Kit from The Bead Gallery, Honolulu includes:

16" finished basic cable chain necklace - 1 piece

Kahelelani shells from Kaua`i - 6 pieces

Vintage plated Czech glass 13/0 charlottes - approximately 10 pieces

24 gauge half hard wire - 6 inches

Makes up to a 17" necklace

## VIDEO TUTORIALS:

[Basic Wire Wrap at The Bead Gallery](#)

like &  
subscribe!



\*Additional Tools Required

Basic Wire Wrap pliers (Chain,  
Round & Flat Nose pliers)

Wire Cutter



# About this kit:

This necklace is perfect for anyone who loves minimalist jewelry! It features tiny, handpicked Hawaiian sea shells, accented with vintage silver plated charlottes.

Kahelelani shells are the smallest & rarest of the shells which are mainly found on the islands of Ni`ihau and Kaua`i.



SHOP LIVE IN 2 PLACES NOW!  
FACEBOOK AND ON OUR WEBSITE!

Pick what YOU want live or in replay!

