

Leafette Earrings!

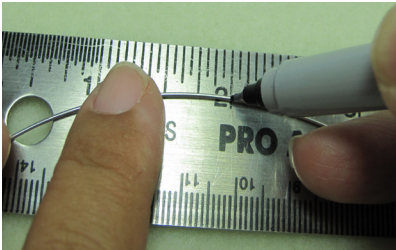


recommended supplies (used in this video):

20gauge half-hard wire - 18 inches
earwires
beads and headpins

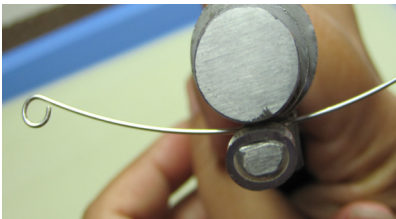
tools you need:

chain, round, flat nose pliers
flush cutters
large 3-step wrap and tap plier
chasing hammer
bench block or anvil
polish pad, polishing cloth OR tumbler
ruler
sharpie pen



1.) large leaf: measure out 4" of wire and mark the middle with a sharpie pen.

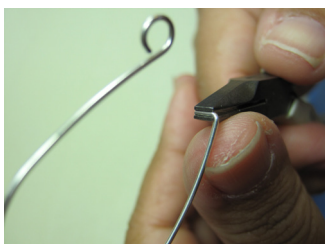
2.) turn a loop on the base of the lindstrom round nose plier (approx. 4mm).



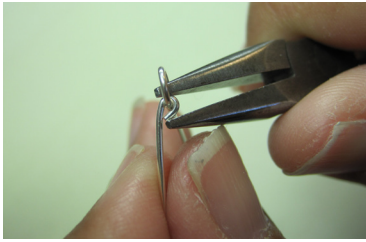
3.) pinch the sharpie mark & make a skinny horseshoe on the base of the large wrap and tap plier.



* it should look like this!

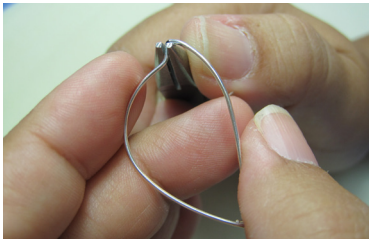
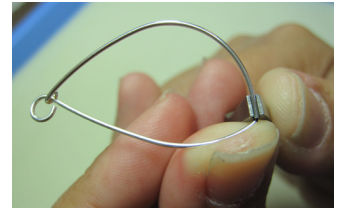


4.) pinch the end of the wire with the edge of flat nose plier, & turn a 90° angle.



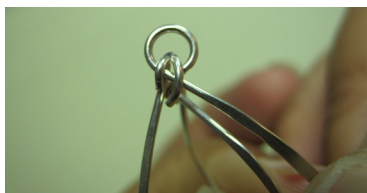
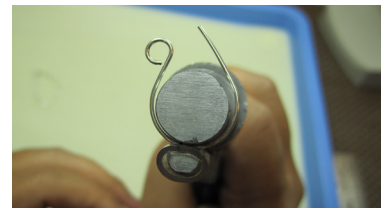
5.) poke the wire into the loop. use the chain nose plier to press the wire down tightly.

6.) with the flat nose plier, shape a point at the pen mark (or where you want!)



7.) use the chain nose plier to turn a jaunty angle at the point. hammer to flatten & harden your shape.

8.) small leaf: cut 2-1/2" of 20g wire. form a horseshoe on the top step of the large wrap and tap. repeat steps 4-7 to complete the leaf.



9.) open the loop of the small leaf and hook through both the loop & leaf of the large component.



10.) hook onto an earwire, add beads and wear!