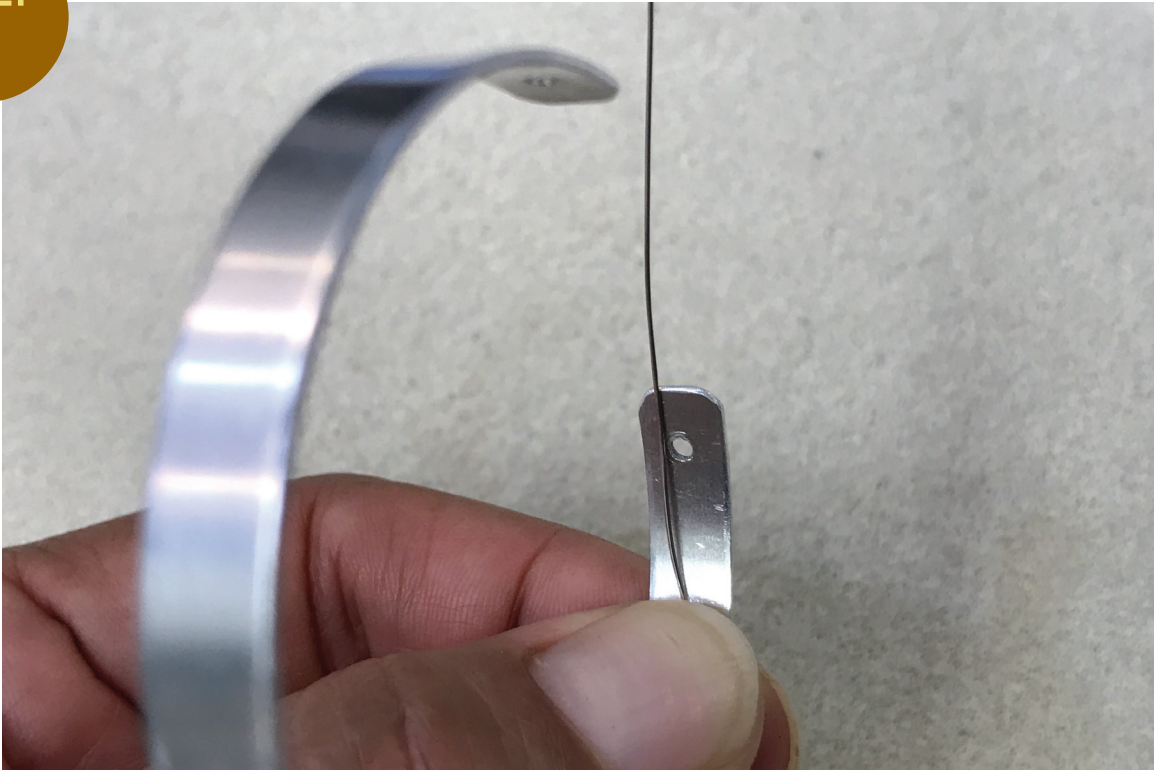




THE BEAD
GALLERY
live.love.create

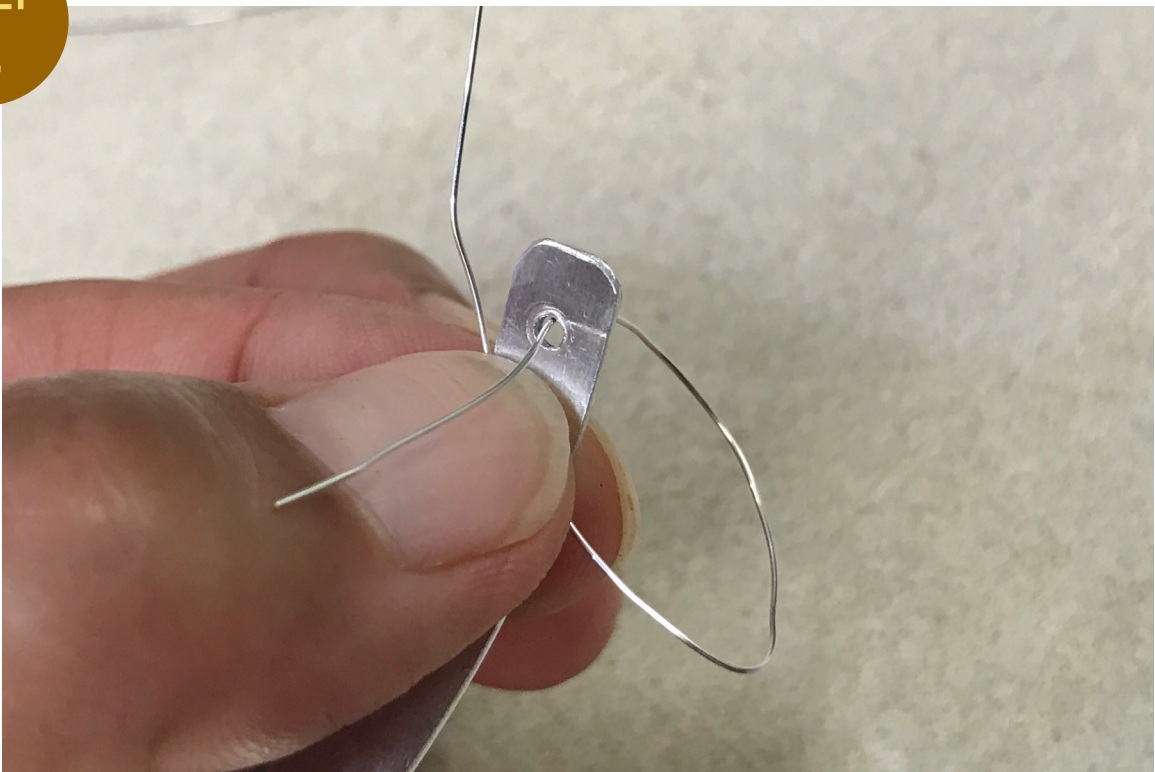
OFF THE CUFF
INSTRUCTIONAL PDF

STEP
1



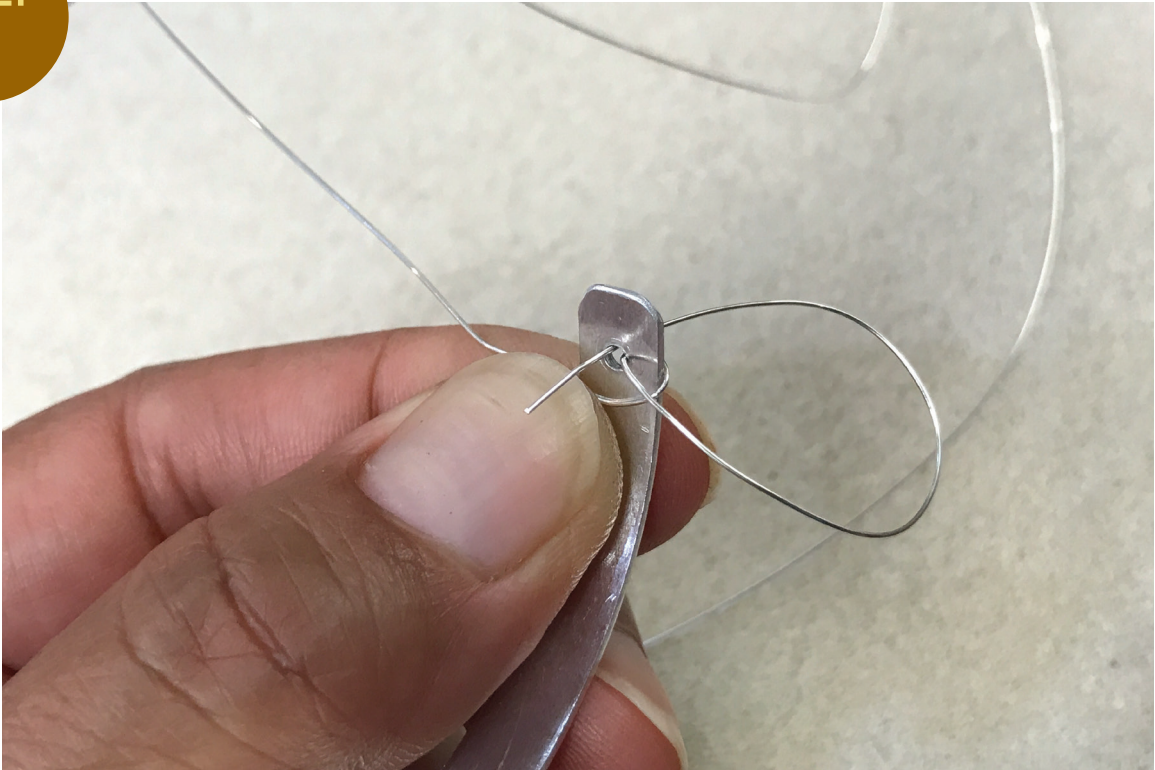
Measure 4" of wire and lay against the back of the cuff.

STEP
2



Use that same 4" to circle through the hole.

STEP
3



Wrap one more time to strengthen the wire's attachment to the cuff.

STEP
4



Press the short tail down to lay against the back of the cuff.

STEP
5



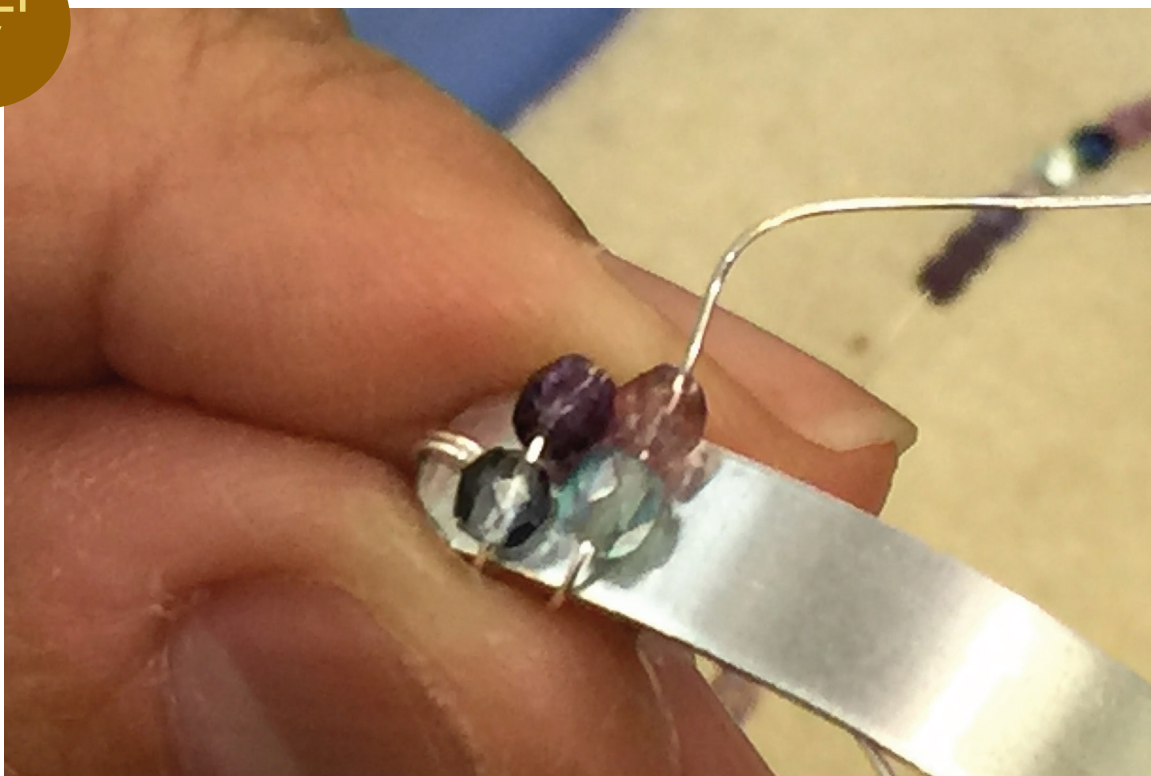
On the long end, string your 3mm beads
the way you like!

STEP
6



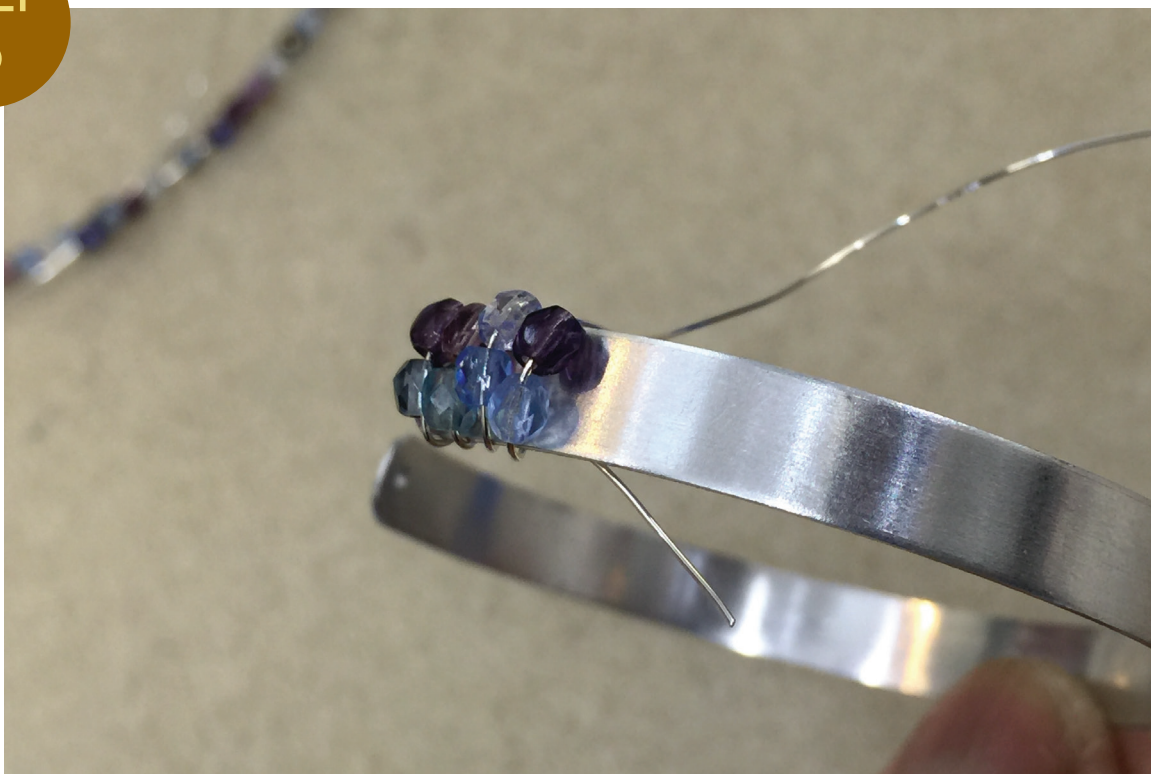
Turn a small hook at the end of the wire with
pliers to stop the beads from falling off.

STEP
7



Drop two beads to lay against the cuff and wrap around the cuff once to secure - repeating until you reach the end.

STEP
8



Stagger the beads slightly for a better fit on the 6mm wide cuff.

STEP
9



After a couple of rows, clip the tail shorter. It's not necessary to secure the entire length down.

STEP
10



Continue to the end until you reach the hole.

STEP 11



Pull the wire through the hole to the back side. Wrap it 2 times, or until you feel like it's securely fastened.

STEP 12



Wrap the tail around the binding wire to hide and end it. Tuck the ends in with the chain nose pliers.

STEP 13



Done!

SUPPLIES:

- aluminum cuff with holes - 6mm or 1/4" wide
- 5 feet - 26g soft wire in silver fill, sterling silver or fine wire
- beads - approximately 100 3mm fire polish

TOOLS:

- cutter
- chain nose pliers